

STATE OF OREGON

PNREC State & Provincial Outlook Session

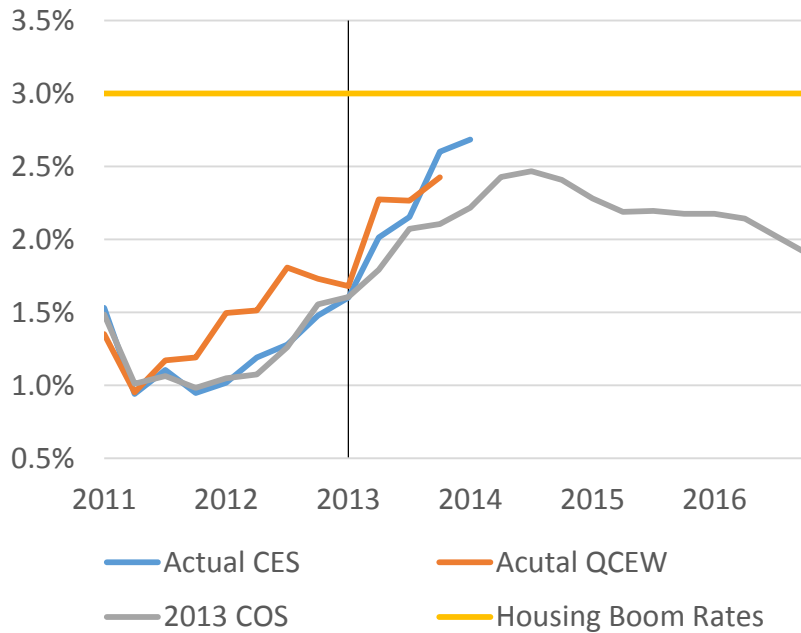
May 9th, 2014

Mark McMullen
State Economist

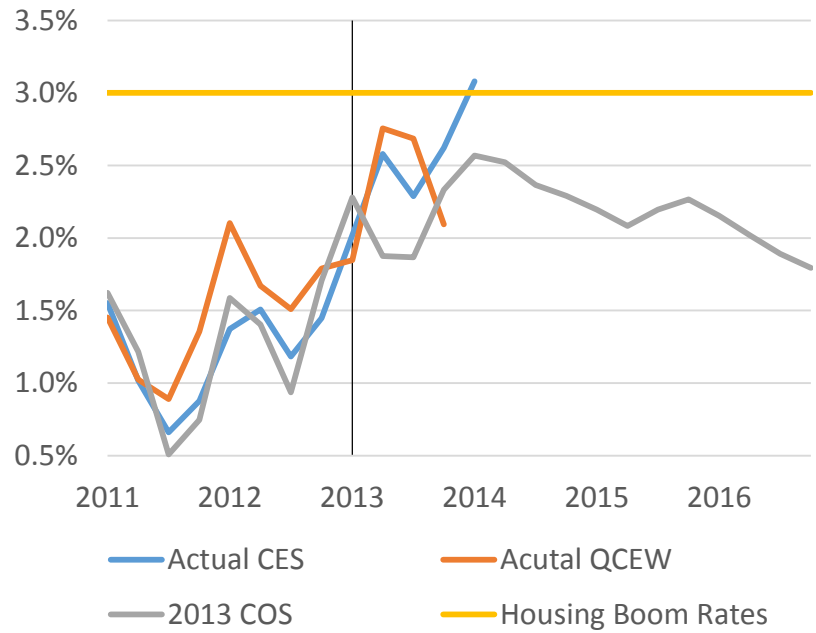


Pace of Job Growth Now Matches Housing Boom

Employment Growth Year-over-Year

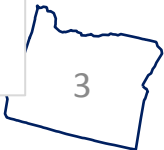
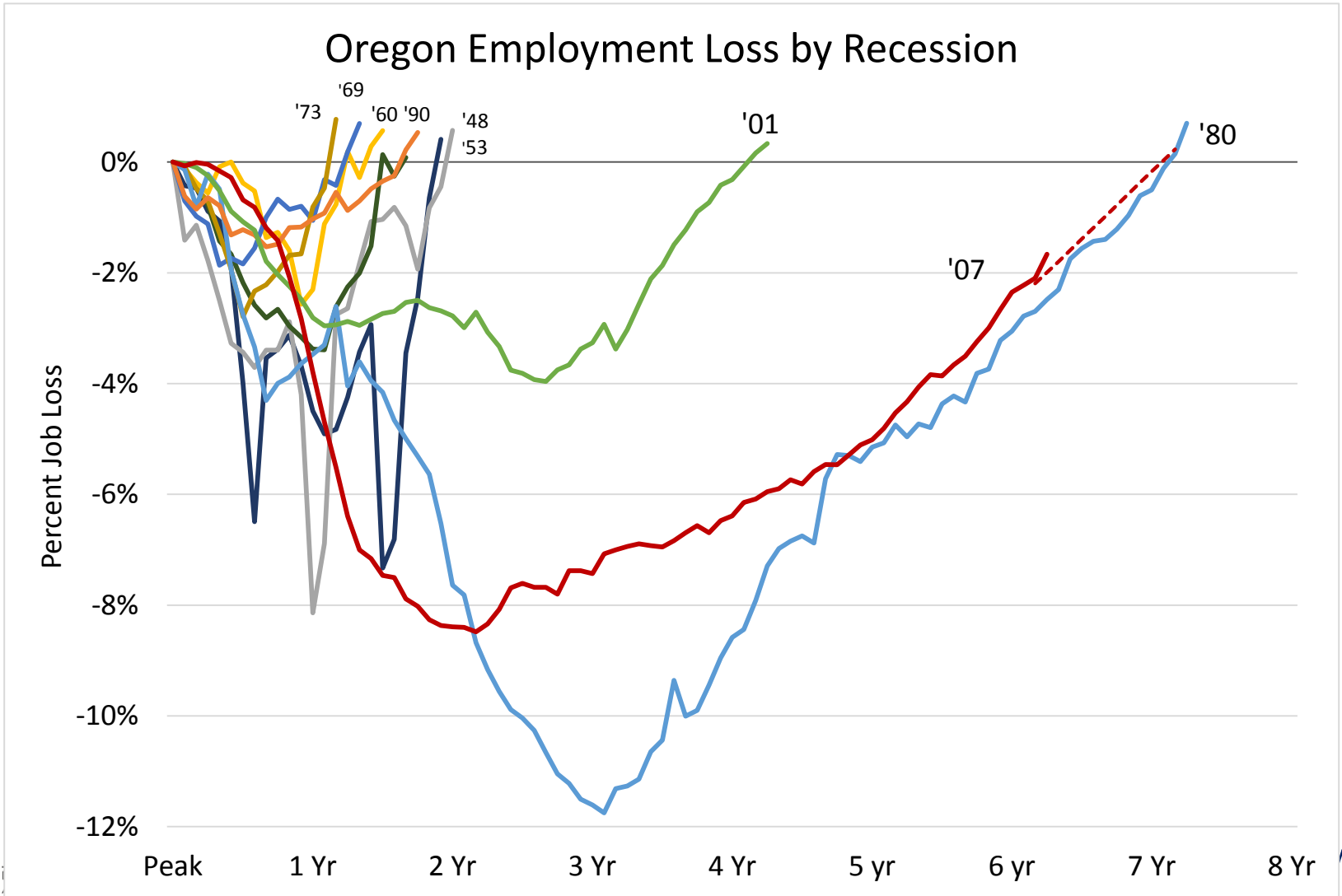


Employment Growth 6 Month Annualized Growth

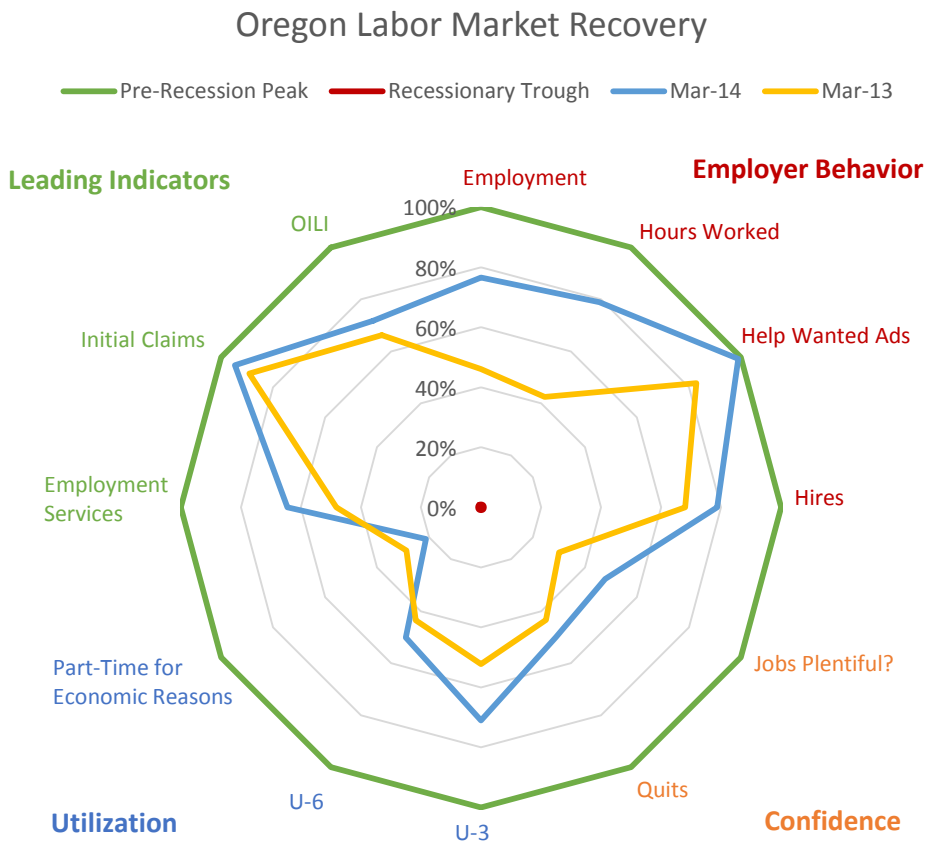




Then and Now



Dissecting Oregon's Labor Market Recovery

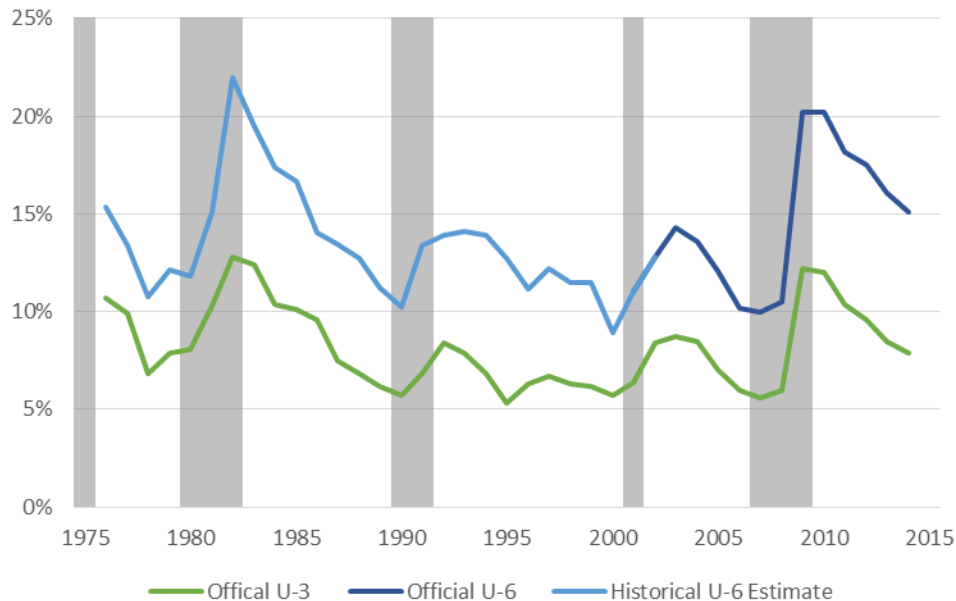


- Leading indicators looking up
- Employer behavior improving – more help wanted ads and increased hiring
- “Feel good” nature of recovery not here yet, as confidence and utilization not back

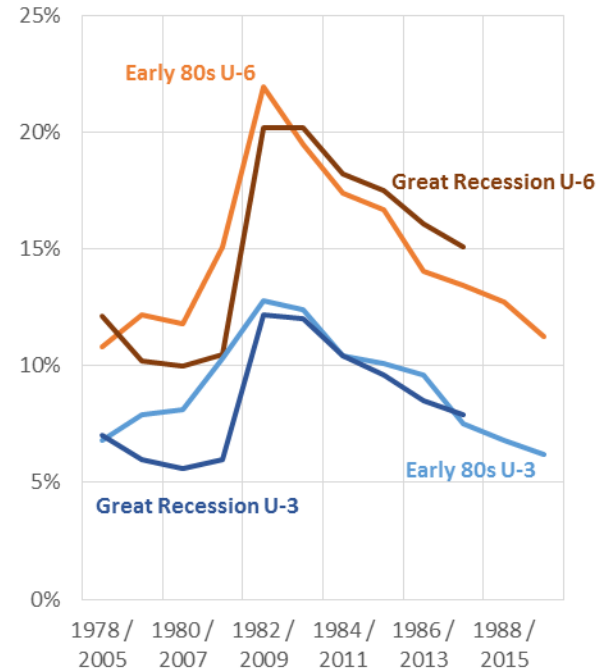


Then and Now

Historical U-6 in Oregon
March of Each Year
Estimates based on Current Population Survey



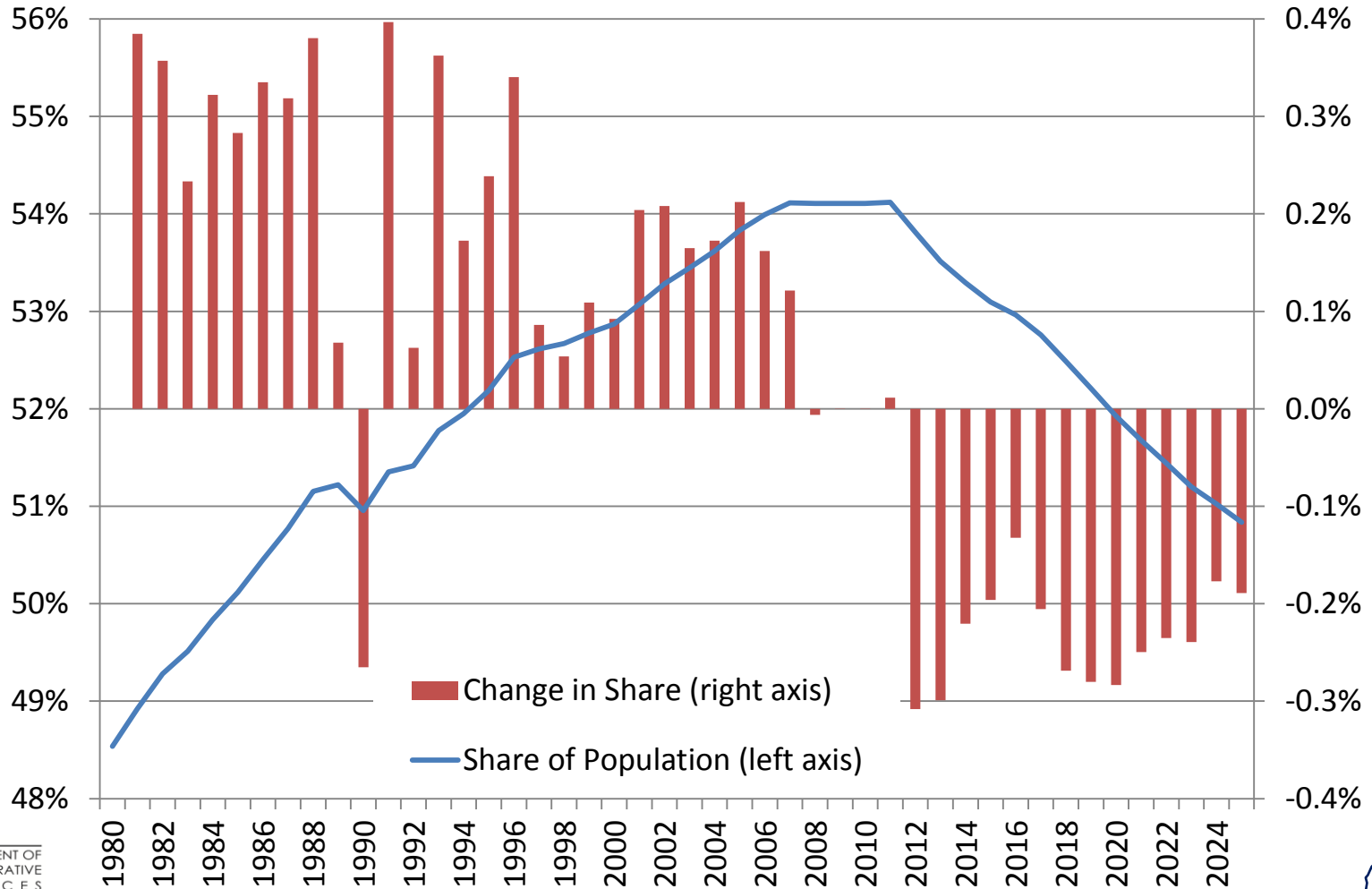
Severe Recessions in Oregon





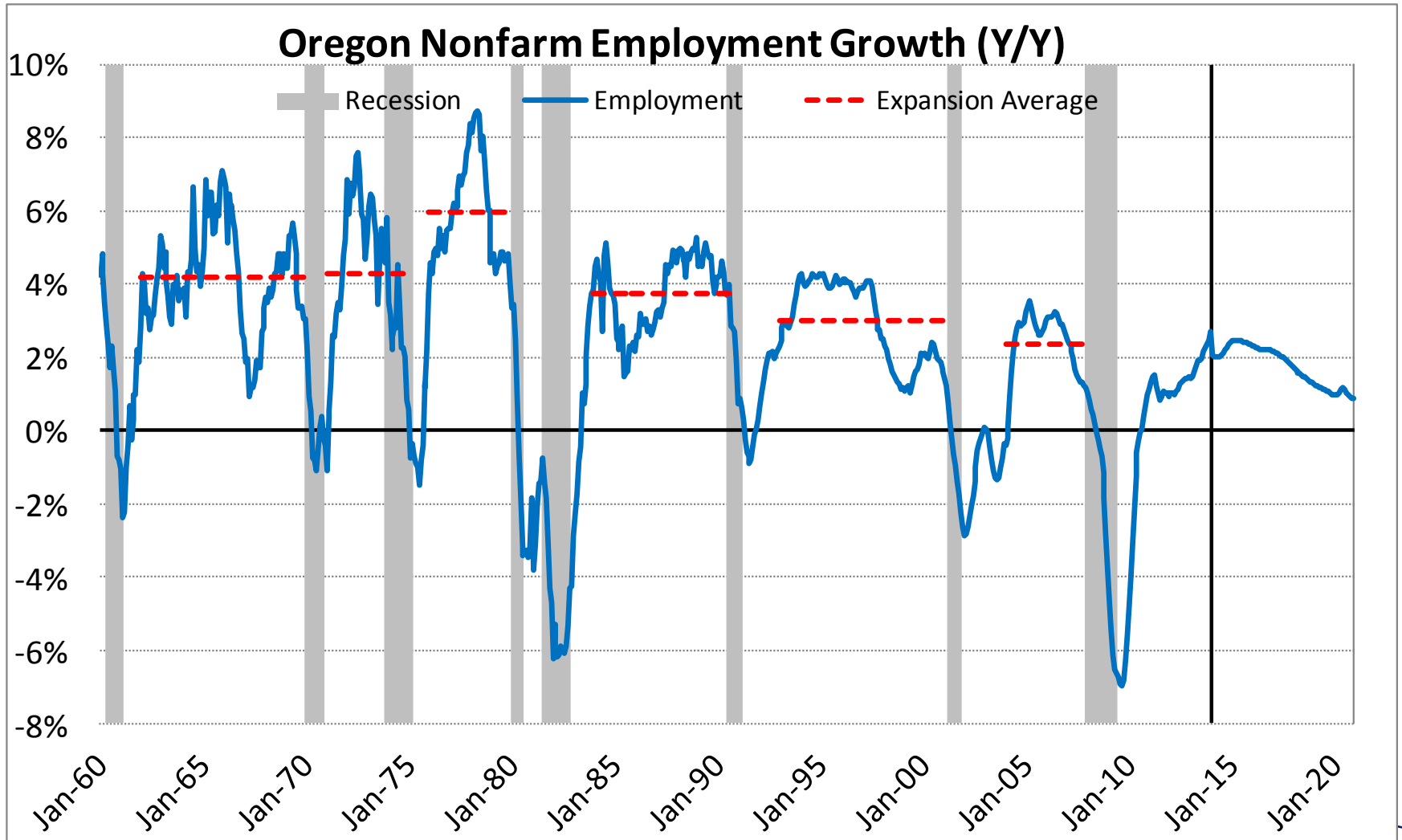
Losing Experienced Workers

Oregon Population Aged 25 to 64 Years





Oregon's Employment Outlook





For More Information

Standard Contact:

155 Cottage Street NE

Salem, OR 97301

(503) 378-3405

oea.info@state.or.us

www.oregon.gov/das/oea

Social Media:

oregoneconomicanalysis.wordpress.com

[@OR_EconAnalysis](#)