

**OREGON  
WHEAT**





## Production

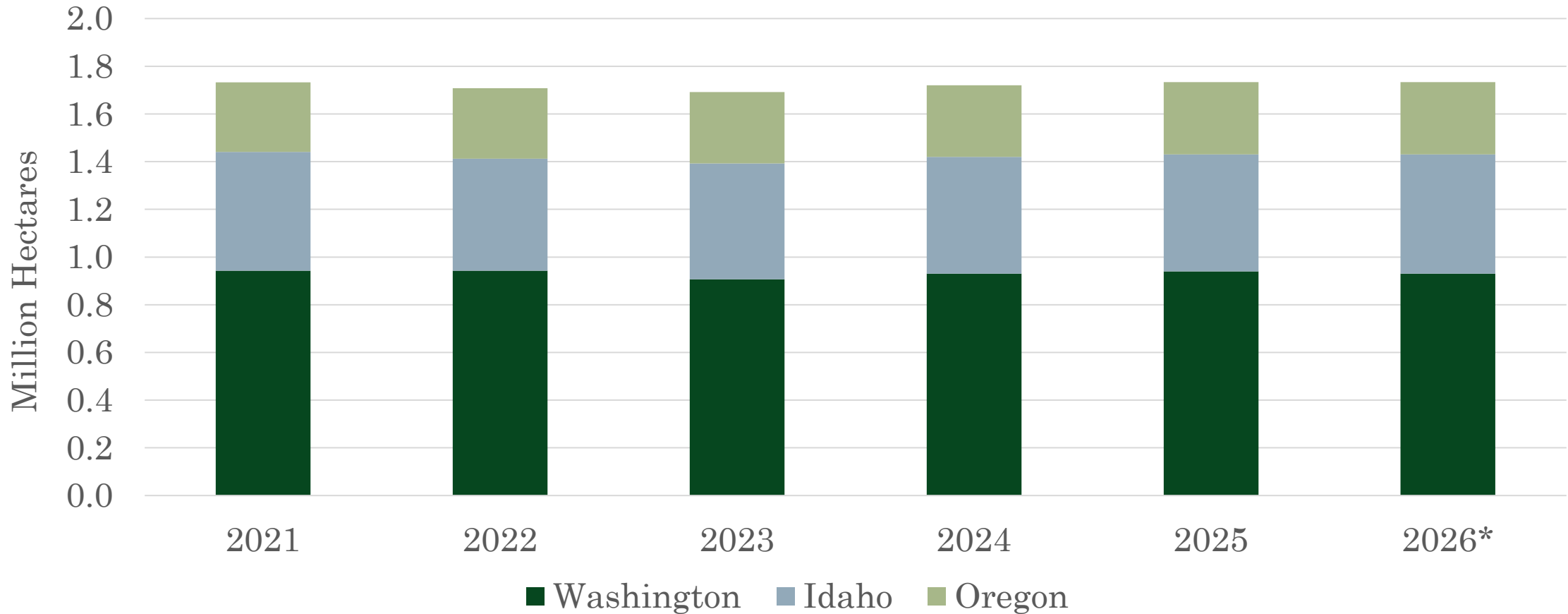
- 750,000 acres
- 1.25 million metric tons

## Markets

- 90% export
- North and South Asia primary destinations



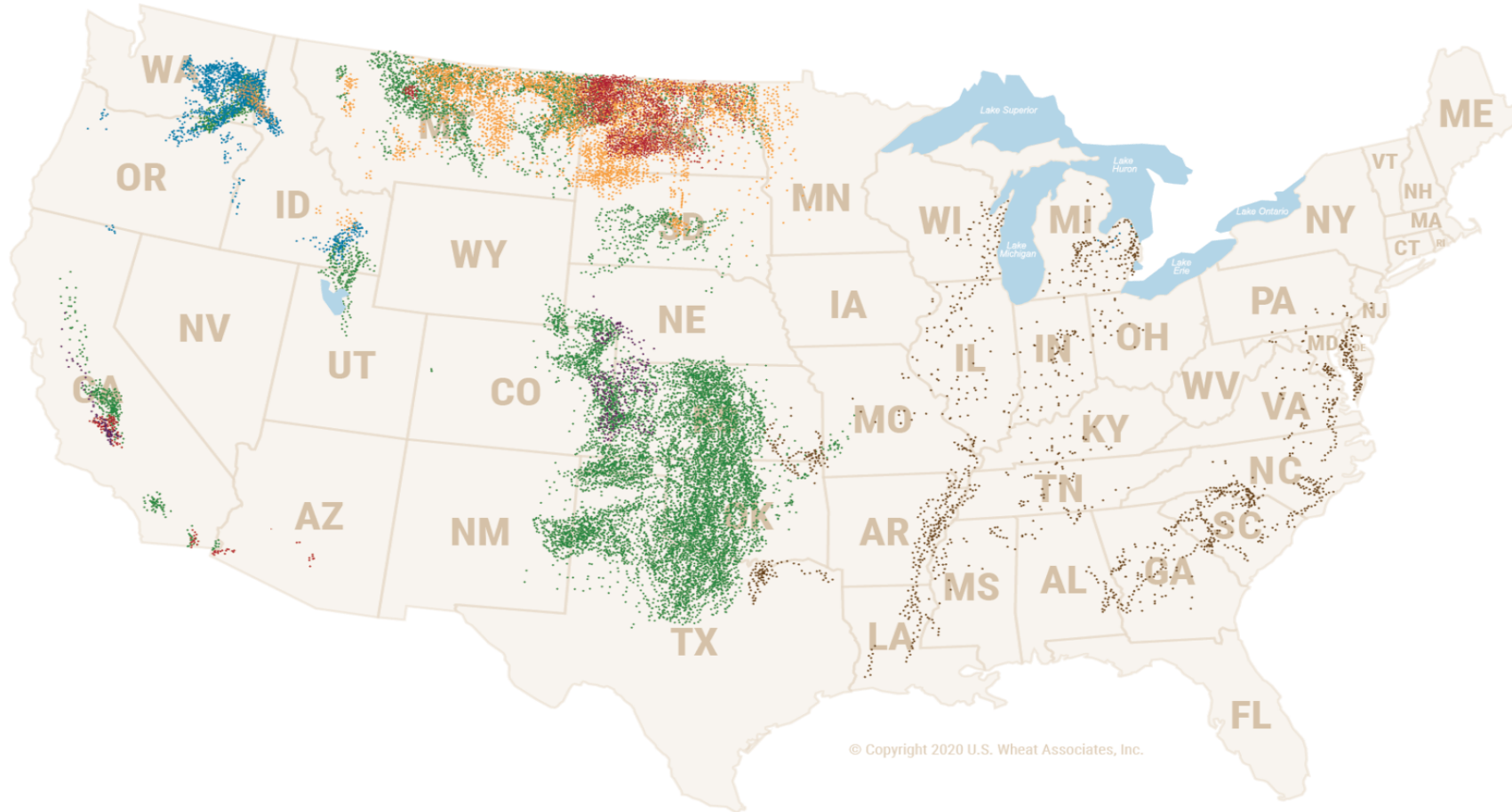
# PNW All Wheat Plantings



\*2026 planting estimates released 3/31/26

Source: USDA/NASS

# Soft White: A Premium Wheat



● **Hard Red Winter (HRW)**

● **Soft Red Winter (SRW)**

● **Hard White (HW)**

● **Hard Red Spring (HRS)**

● **Soft White (SW)**

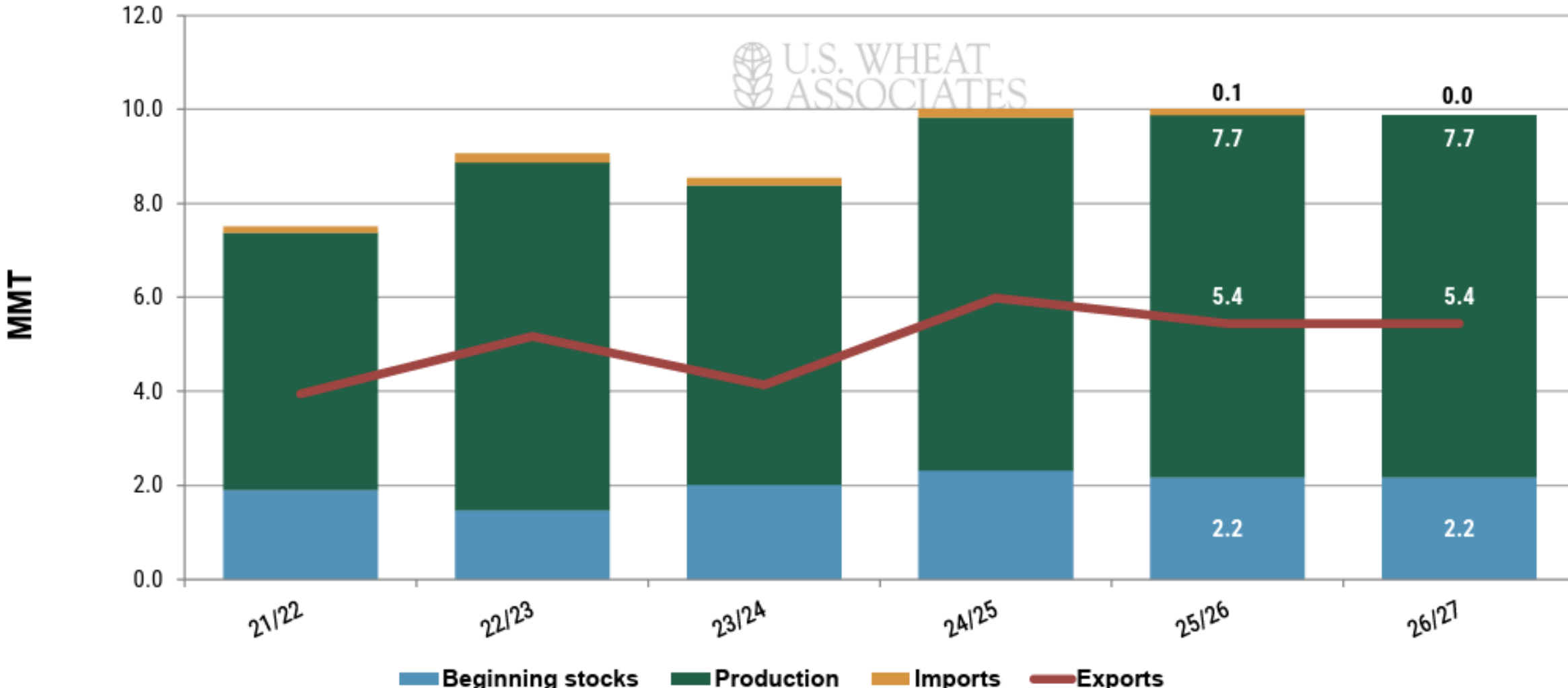
● **Durum**

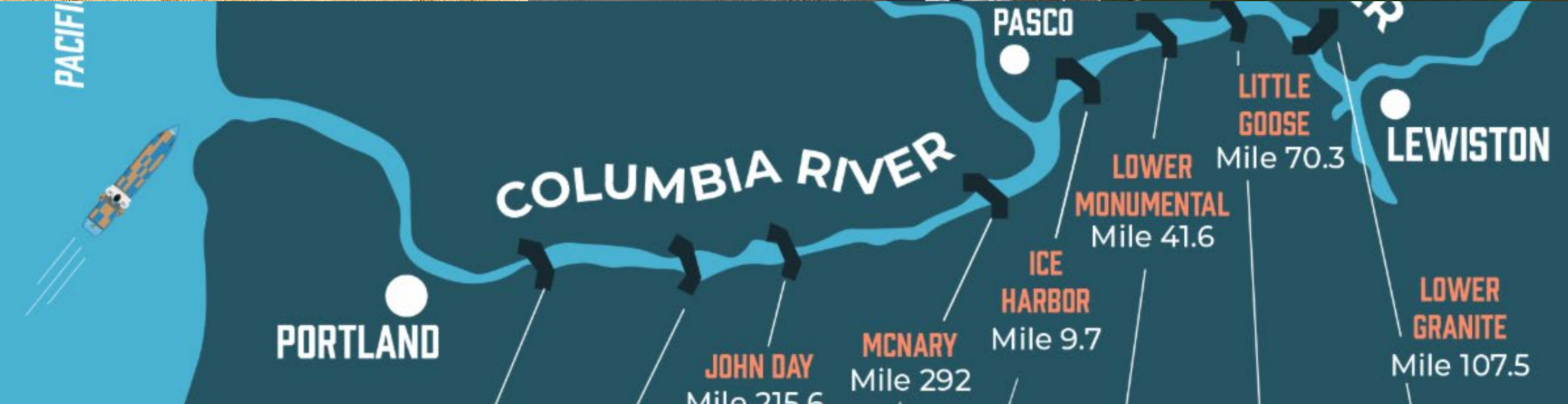


# Crop Cycle

- Planting: Fall and Spring
- Plant Development
- Harvest: July-September

# U.S. White







# BULK CARRIERS BY THE BUSHEL

## Ship Sizes That Move U.S. Wheat

### HANDYMAX



Carries **515k** to **1.1** million bushels of wheat or about **300 rail cars**



**1.6 to 2.2**



American football fields

*Used at smaller ports, but less common for U.S. wheat*

### SUPRAMAX



Carries **1.5** to **2** million bushels of wheat or about **532 rail cars**



**2.2** American football fields



*Common Route: U.S. Gulf to Latin America*

### PANAMAX



Carries **2** to **2.2** million bushels of wheat or about **580 rail cars**



**2.5** American football fields



*Common Route: PNW to Asia  
Most common for U.S. wheat*

# TOP DESTINATIONS WHITE WHEAT



TOP MARKETS

MY 24/25



SOUTH KOREA

PHILIPPINES

JAPAN

INDONESIA

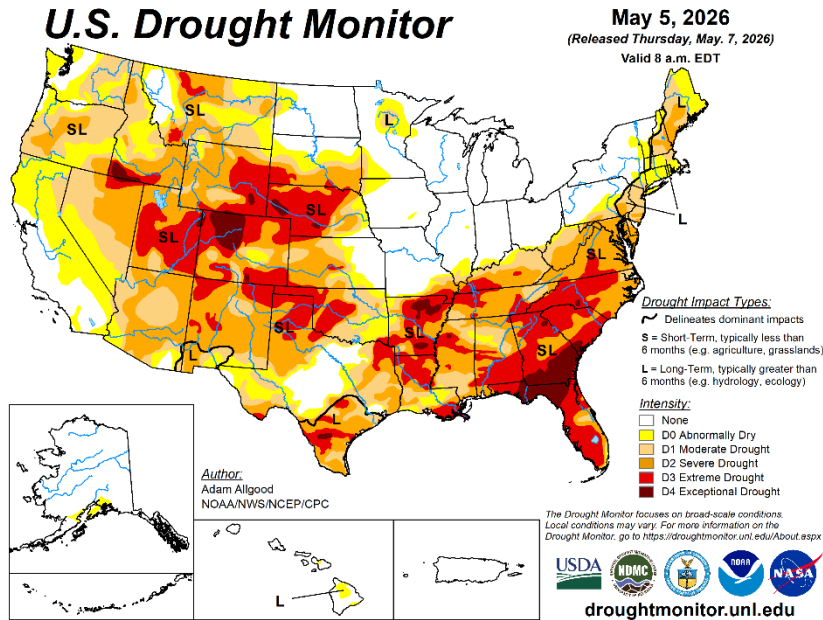
VIETNAM

THAILAND



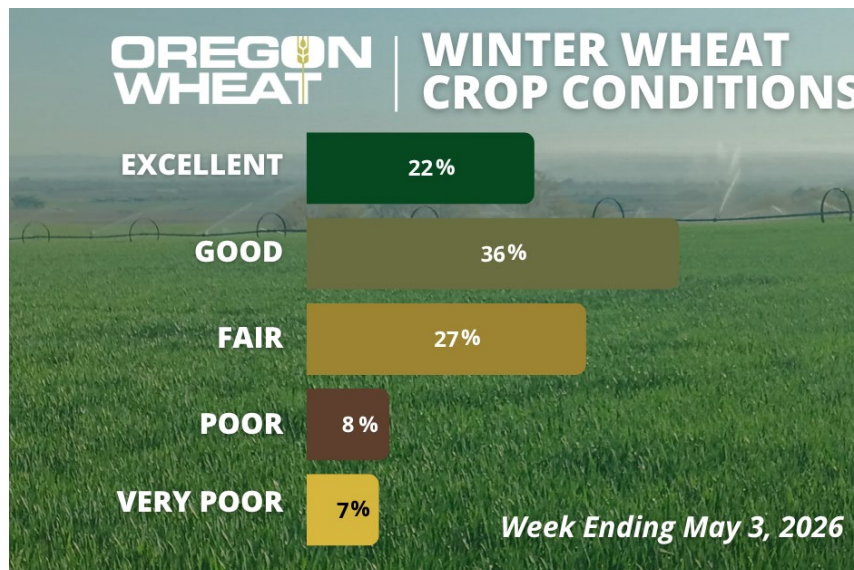
## Markets

- Stable and Growing Markets
- New and Expanding Markets



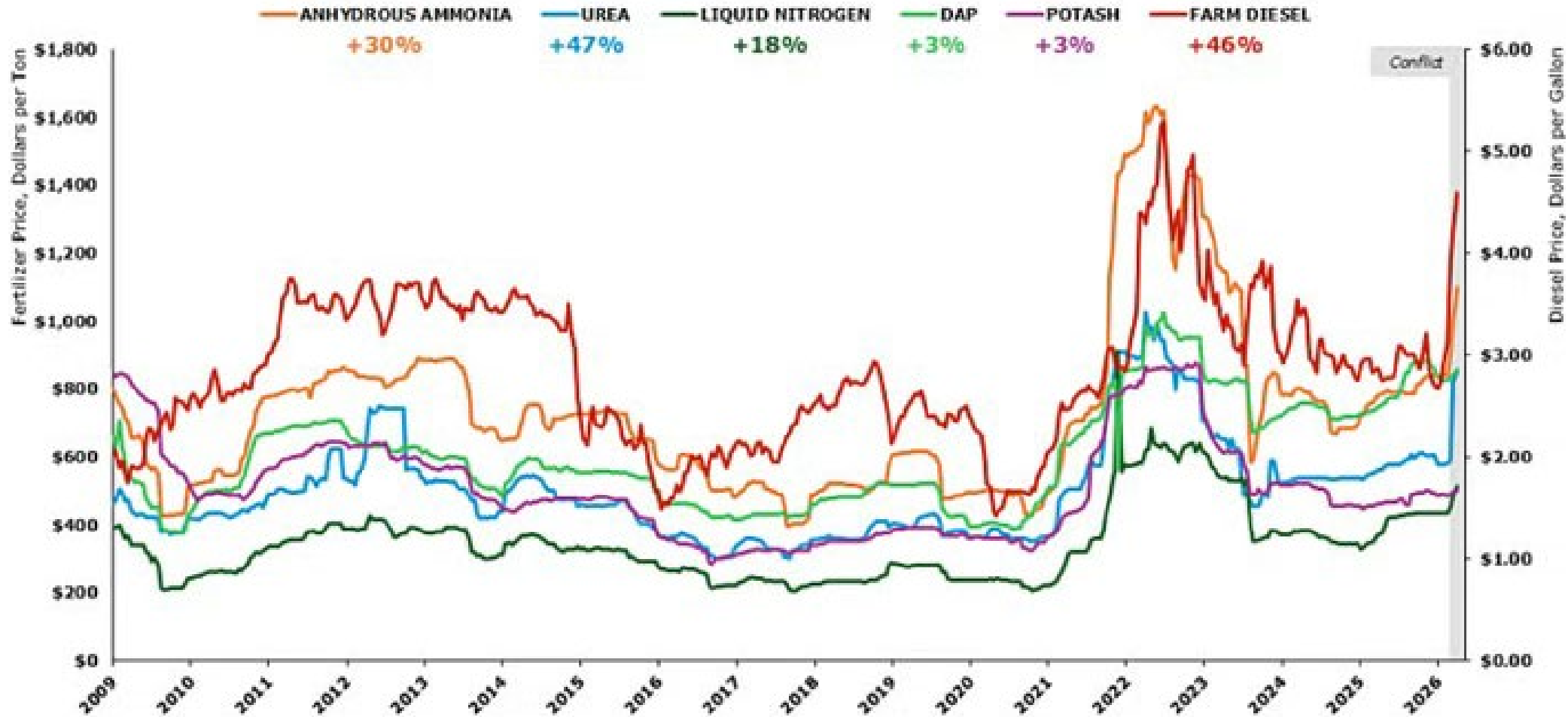
# Farm Gate/Markets

- Global Conflicts
- Shipping/ Freight
- Input Costs; Accessibility
- Farmland Pressures
- Crop Outlook



# Rising Farm Input Costs

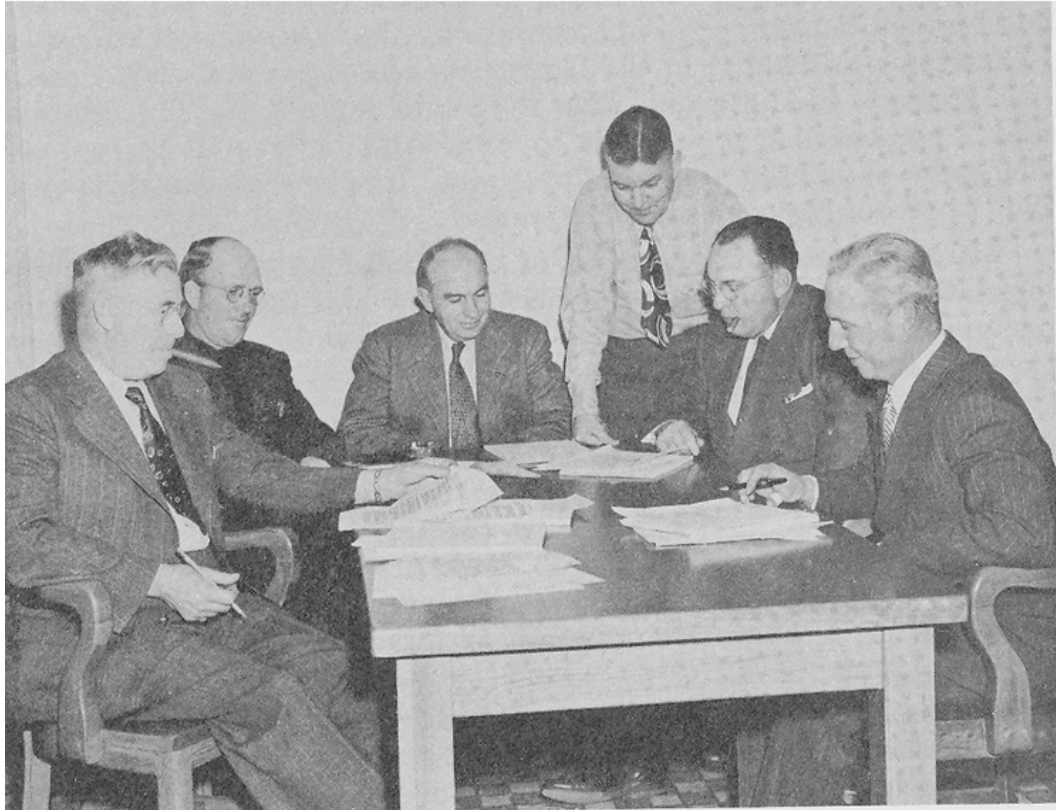
## Farm Fertilizer and Diesel Prices Climb





# Investments

- Market Development
- Research
- Grower Education



# Oregon Wheat: 100 Years

**OREGON  
WHEAT**

